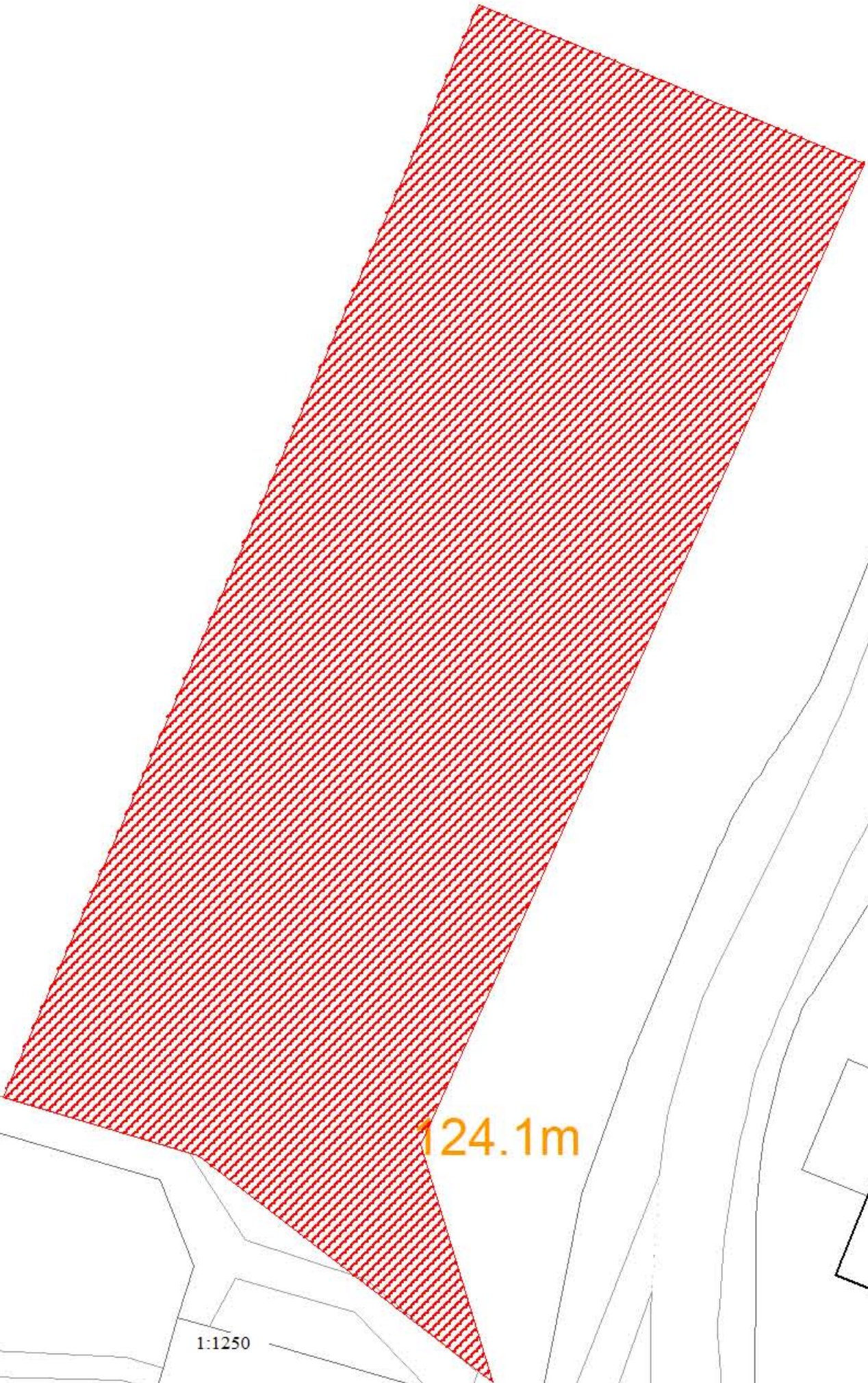


REFERENCE NUMBER:
FUL/2018/1788

SITE:
PARK HILL PRIMARY SCHOOL
LOWER EASTERN GREEN LANE



124.1m

1:1250

31

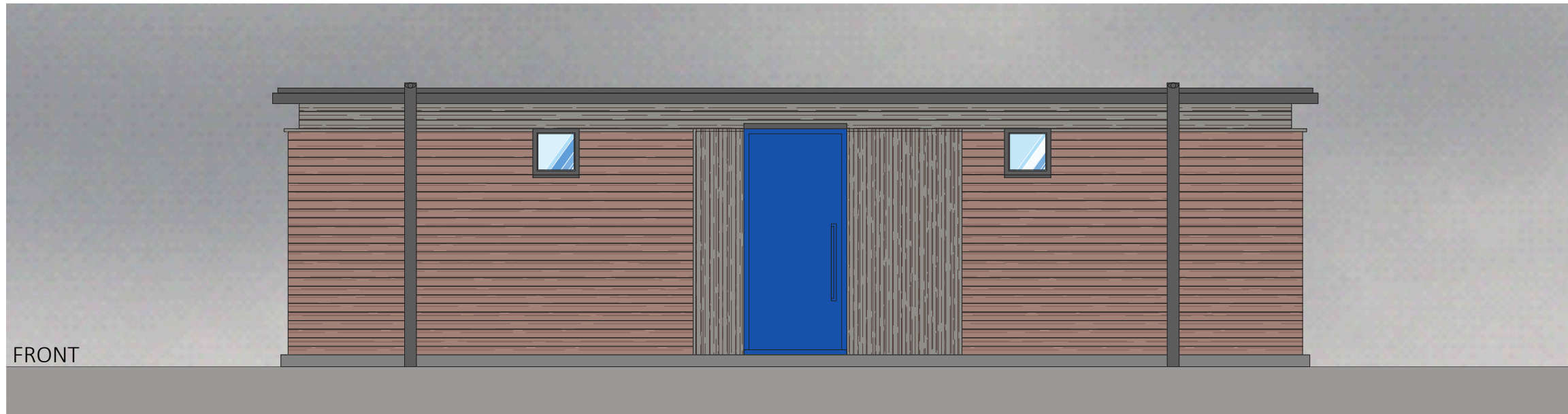
41

39

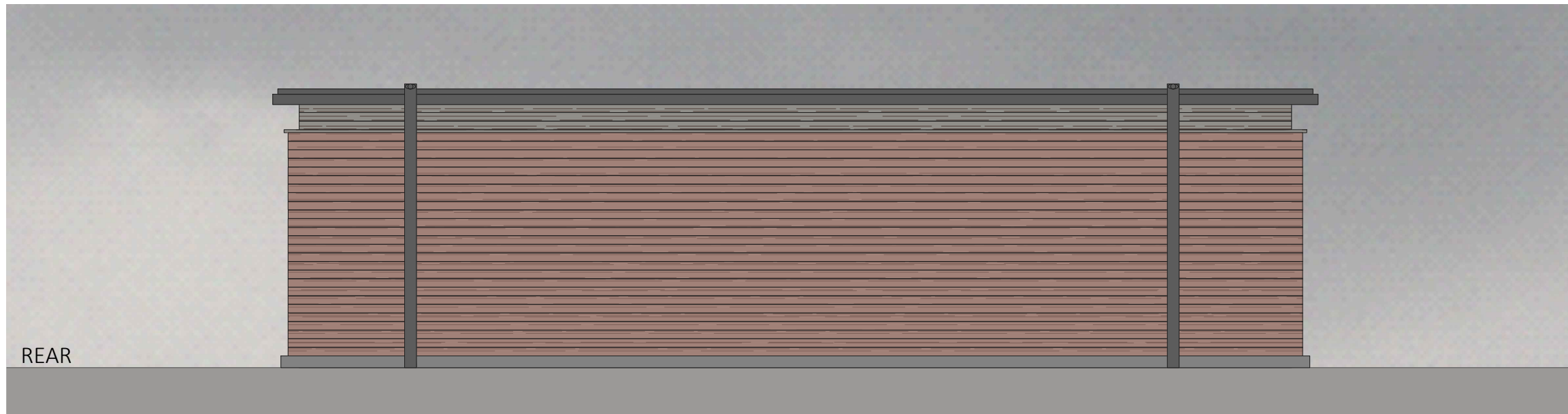
29

21

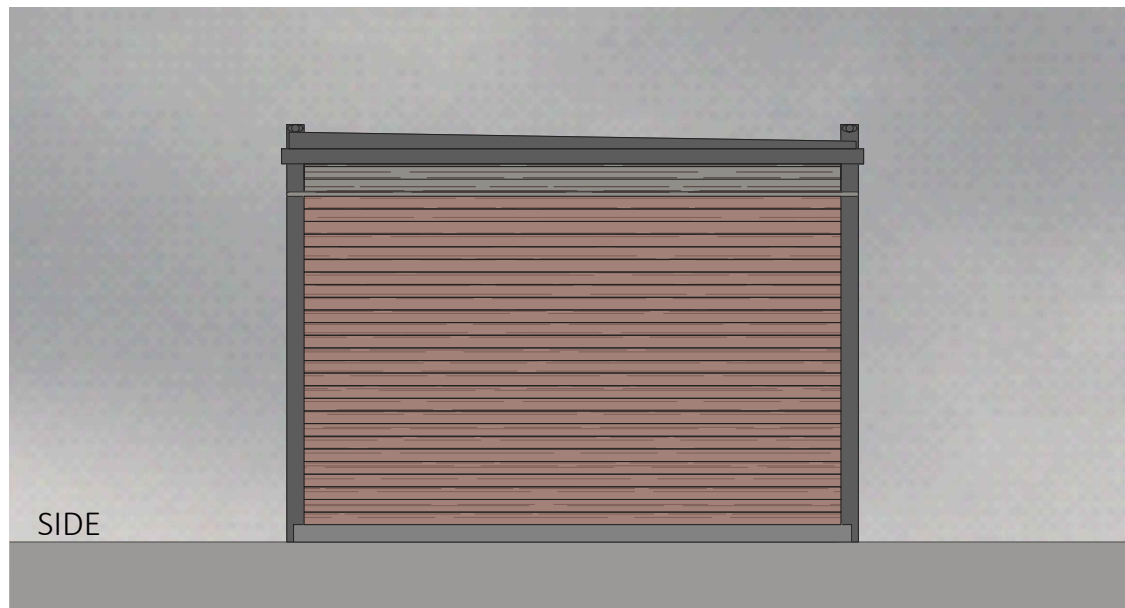
WESTERN LONGITUDINAL ELEVATION VIEWED FROM OUTSIDE CHANGING ROOMS



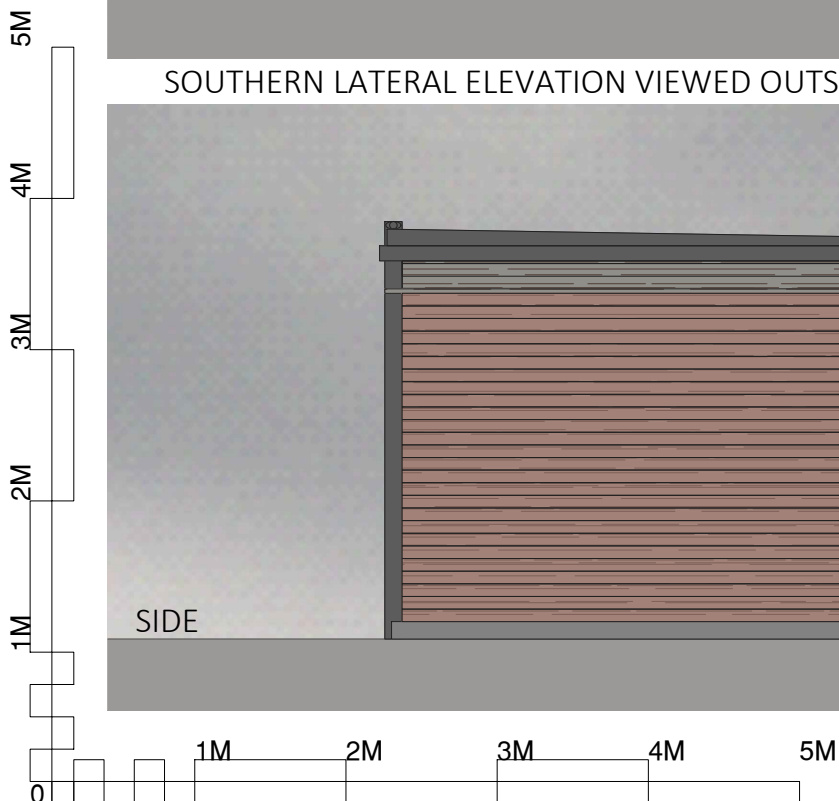
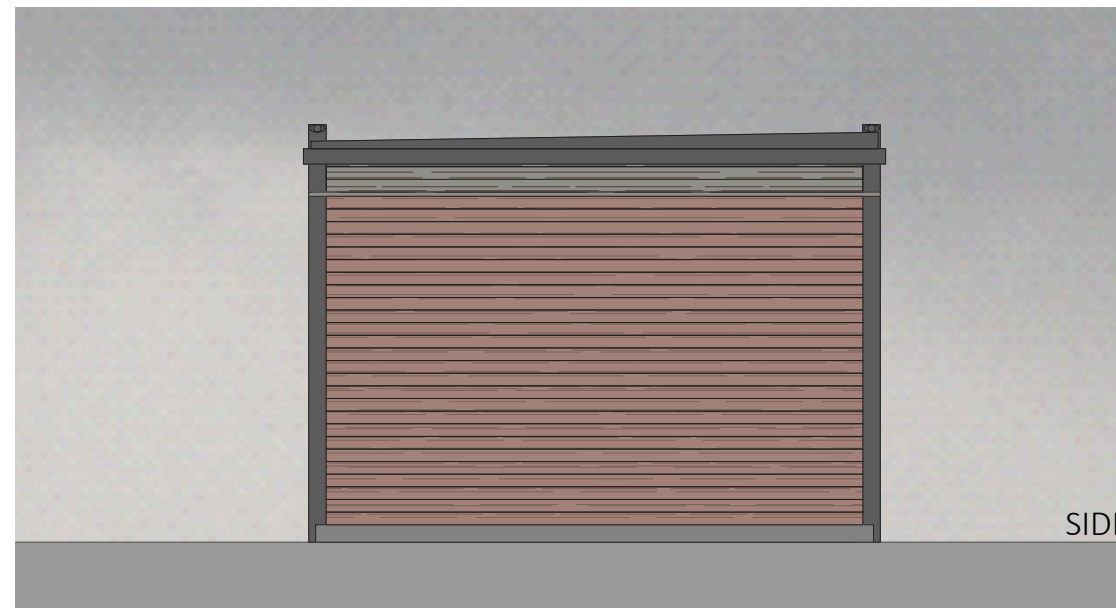
EASTERN LONGITUDINAL ELEVATION VIEWED FROM OUTSIDE CHANGING ROOMS



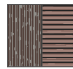
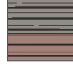


SOUTHERN LATERAL ELEVATION VIEWED OUTSIDE CHANGING ROOMS




NORTHERN LATERAL ELEVATION VIEWED OUTSIDE CHANGING ROOMS




Do not scale from this drawing.
 Check all dimensions prior to commencement of works.
 No guarantee can be given that all services have been shown on the drawing.
 No guarantee can be given to the accuracy and completeness of any service provider record information shown in this drawing and no liability will be accepted for any losses that arise due to a lack of accuracy in any service providers record information.
 Relevant service drawings should be obtained from appropriate service providers and used in conjunction with this drawing.
 Reference should also be made to historical plans and as built drawings.
 This drawing is copyright to Labosport Ltd.

- NOTES**
-  EXTERNAL CLADDING:
STAINED TIMBER SOFTWOOD PANELS FIXED DIRECTLY TO FRAMING SYSTEM ONTO STEEL SHELL WITH FIXINGS AS PER MANUFACTURERS RECOMMENDATIONS
 -  EXTERNAL CLADDING:
STAINED TIMBER SOFTWOOD PANELS FIXED DIRECTLY TO FRAMING SYSTEM ONTO STEEL SHELL WITH FIXINGS AS PER MANUFACTURERS RECOMMENDATIONS
 -  PRE-CAST CONCRETE (PCC) AND GRAVEL STRIP TO PERIMETER ENSURING ADEQUATE VENTILATION TO UNDERFLOOR VOID
(METAL FRAME AND POST TO STEEL SHELL TO BE CONCEALED)
 -  ROOF:
FIBREGLASS ROOF (GRP) COLOURED DARK GREY OR SINGLE PLY MEMBRANE ROOF OR EQUIVALENT HI-PERFORMANCE ROOFING SYSTEM USING APPROPRIATE TRIMS TO MANUFACTURERS DETAILS ON 18MM OSB BOARDING LAID TO FALLS (MINIMUM 1:60 GRADIENT) USING TREATED SW FIRINGS ON STRUCTURAL / MODULAR DECK




60MM CELOTEX GA3050 INSULATION OR SIMILAR APPROVED (MINIMUM THERMAL CONDUCTIVITY OF 0.022W/MK) FIXED TO UNDERSIDE OF MODULAR UNIT WITH BATTENS AT APPROPRIATE CENTRES TO SUPPORT 15MM GYPROC DURALINE MR CEILING FINISH

DRIP TRIM TO ROOF PERIMETER FIXED TO MANUFACTURERS RECOMMENDATIONS
 -  DOOR:
STEEL SECURITY OR UNPLASTICIZED POLYVINYL CHLORIDE (UPVC) ENTRANCE DOOR COLOURED PANTONE 2387C BLUE

EXTERNAL DOOR TO ACHIEVE AN AREA WEIGHTED AVERAGE OF 1.8W/M2K

LEVEL APPROACH AND THRESHOLD WITH 1M MINIMUM CLEAR OPENING WIDTH
 -  WINDOW:
THERMALLY BROKEN ALUMINIUM OR UNPLASTICIZED POLYVINYL CHLORIDE (UPVC) ENTRANCE DOOR COLOURED DARK GREY

WINDOW TO ACHIEVE AN AREA WEIGHTED AVERAGE OF 1.8W/M2K

WINDOW CILL TO SUITABLE DEPTH TO PROJECT PAST EXTERNAL CLADDING (MINIMUM 30MM)
 -  FASCIA SOFFIT, TRIMS AND CAPPING:
POLYESTER POWDERED COATED (PPC) ALUMINIUM COLOURED DARK GREY
 -  FOUL SEWERAGE:
FOUL WATER, CONNECT TO PRIVATE SEWER (1:80 GRADIENT)
 -  SURFACE WATER DRAINAGE:
RAINFALL COLLECTED FROM BUILDING ROOF TO DISCHARGE INTO LOCAL NEW A SOAK AWAY SYSTEM IF GROUND CONDITIONS ALLOW OR TO LOCAL SEWER (SURFACE WATER OR COMBINED) IF INFILTRATION NOT POSSIBLE

LEGEND / KEY



Labosport Ltd
 Unit 3, Aerial Way, Hucknall, Nottinghamshire, NG15 6DW
 +44 (0)115 968 1998
 www.labosport.com
 info@labosport.co.uk

AUTHOR

PARK HILL PRIMARY SCHOOL

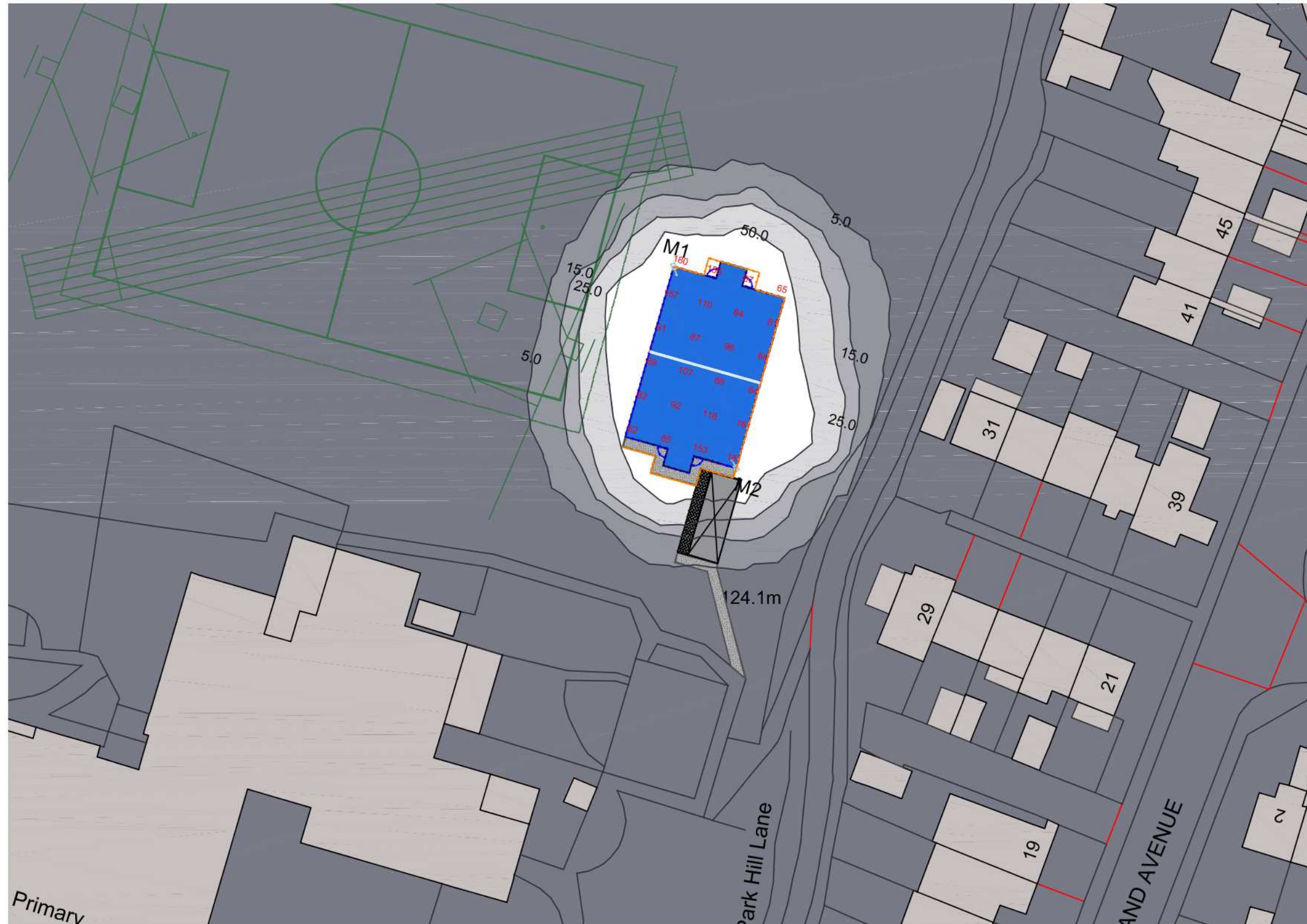
CLIENT

MINI PITCH PROJECT

PROJECT

PROPOSED CHANGING ROOMS ELEVATIONS

PLANNING	TB	REVISION	01
STATUS	ISSUED BY	ISSUE DATE	
LSUK.18-0190	20.06.18		
PROJECT	A3	SCALE	1:50
PAPER SIZE		DRAWING	18-0190 08

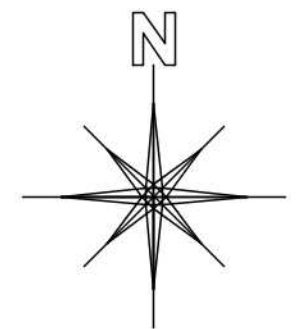


Do not scale from this drawing.
 Check all dimensions prior to commencement of works.
 No guarantee can be given that all services have been shown on the drawing.
 No guarantee can be given to the accuracy and completeness of any service provider record information shown in this drawing and no liability will be accepted for any losses that arise due to a lack of accuracy in any service providers record information.
 Relevant service drawings should be obtained from appropriate service providers and used in conjunction with this drawing.
 Reference should also be made to historical plans and as built drawings.
 This drawing is copyright to Labosport Ltd.

NOTES

-  6.0M HIGH FLOODLIGHT MAST (EXTENDED FENCE POST) MOUNTED WITH 1NO. LED LUMINAIRE
-  110 HORIZONTAL ILLUMINANCE ACROSS MINI PITCH (EXPRESSED IN LUX)
-  5.0 VERTICAL ILLUMINANCE (BACKWARD LIGHT / OVERSPILL) AROUND MINI PITCH (EXPRESSED IN LUX)

FLOODLIGHTING EQUIPMENT:
 2 X 6M MASTS (M1-M2)
 EACH CARRYING THE FOLLOWING FLOODLIGHTS:
 M1-M2...1 X OSRAMLEDFL20MIDI
 OSRAM LED:
 LED 4000K / CRI >=70
 (37 000 INITIAL LM)
 ILLUMINANCE LEVELS:
 INITIAL (100HRS) E.I.AVE = 108LUX
 MAINTAINED (4000HRS) E.I.AVE = 103LUX
 UNIFORMITY:
 EMIN/EAVE = 0.58
 GRID VALUES IN LUX (INITIAL)
 5M GRID INTERVAL
 CONTOUR VALUES IN LUX (INITIAL)
 CONTOURS: 5, 15, 25, 50 LUX
 MAINTENANCE FACTOR:
 0.95

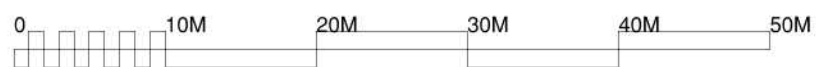


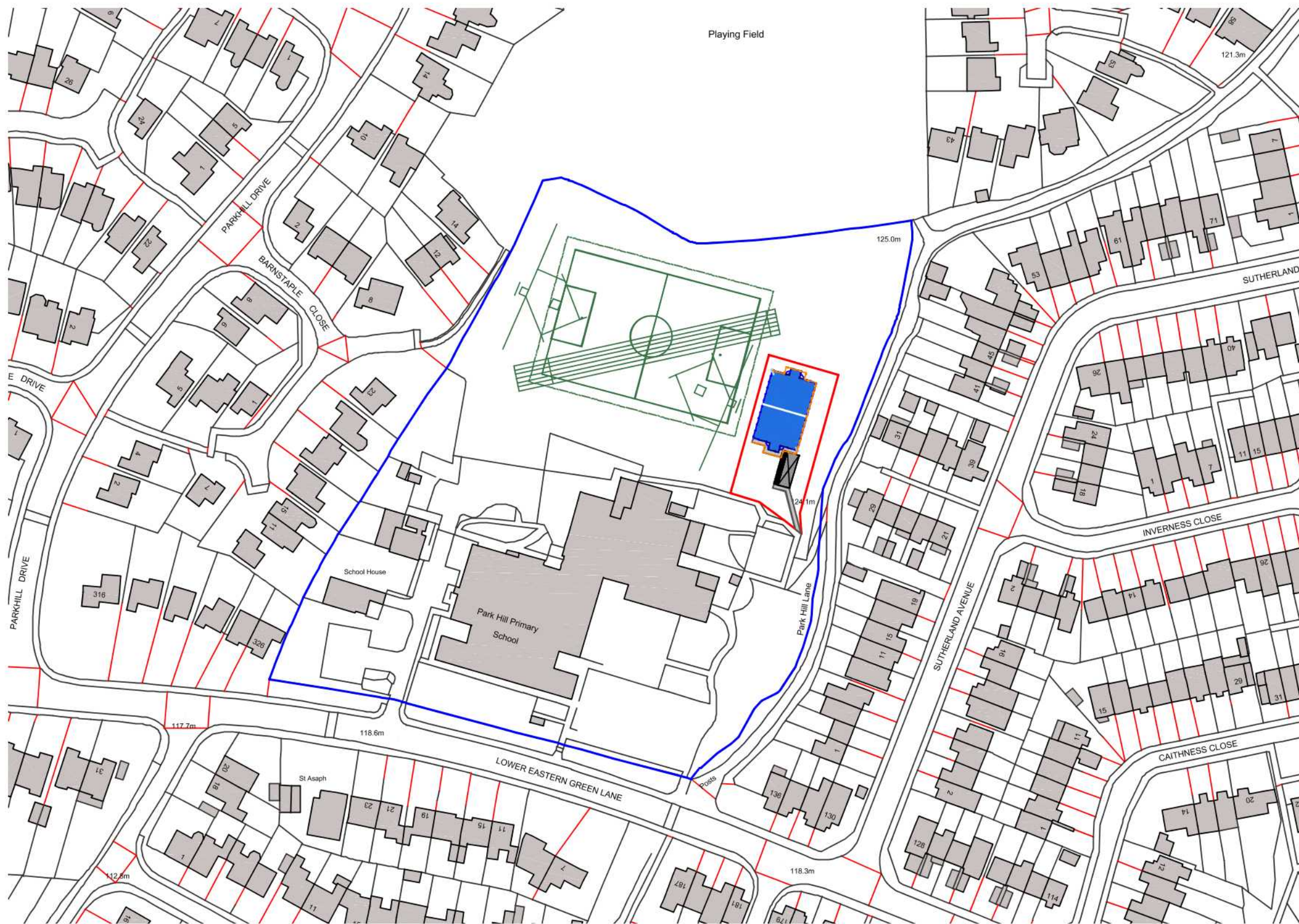
LEGEND / KEY



Labosport Ltd
 Unit 3, Aerial Way, Hucknall, Nottinghamshire, NG15 6DW
 +44 (0)115 968 1998
 www.labosport.com
 info@labosport.co.uk

AUTHOR	PARK HILL PRIMARY SCHOOL		
CLIENT	MINI PITCH PROJECT		
PROJECT	PROPOSED FLOODLIGHTS		
DRAWING	PLANNING	TB	REVISION 01
STATUS	LSUK.18-0190	ISSUED BY 14.07.18	
PROJECT	A3	ISSUE DATE 1:500	18-0190 06
PAPER SIZE	SCALE	DRAWING	

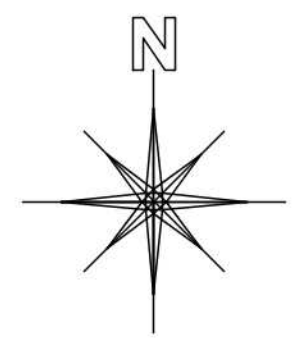




Playing Field

Do not scale from this drawing.
 Check all dimensions prior to commencement of works.
 No guarantee can be given that all services have been shown on the drawing.
 No guarantee can be given to the accuracy and completeness of any service provider record information shown in this drawing and no liability will be accepted for any losses that arise due to a lack of accuracy in any service providers record information.
 Relevant service drawings should be obtained from appropriate service providers and used in conjunction with this drawing.
 Reference should also be made to historical plans and as built drawings.
 This drawing is copyright to Labosport Ltd.

- NOTES
- APPLICATION SITE AREA REQUIRED FOR PROJECT INSTALLATION
 - LAND AREA UNDER OWNERSHIP OF THE APPLICANT
 - ARTIFICIAL SPORTS SURFACING
 - 1.2M HIGH BALL STOP BARRIER WITH 1.8M HIGH BALL STOP NETTING (3.0M TOTAL HEIGHT)
 - 1.2M HIGH BALL STOP BARRIER WITH 1.8M HIGH BALL STOP FENCING AND GOALS (3.0M TOTAL HEIGHT)
 - PEDESTRIAN, MAINTENANCE AND EMERGENCY ACCESS POINT
 - 6.0M HIGH FLOODLIGHT MAST (EXTENDED FENCE POST) MOUNTED WITH 1NO. LED LUMINAIRE
 - CHANGING ROOMS
 - HARD STANDING ACCESS
 - GRASS PLAYING PITCHES - 7V7 MINI SOCCER PITCH 55 X 37M PLUS 3M RUN OFFS TO ALL SIDES, TWO ROUNDERS PITCH AND ONE ATHLETICS SPRINT STRAIGHT
 - 3.5M HIGH REFLECTIVE ACOUSTIC BARRIER



LABOSPORT

Labosport Ltd
 Unit 3, Aerial Way, Hucknall, Nottinghamshire, NG15 6DW
 +44 (0)115 968 1998
 www.labosport.com
 info@labosport.co.uk



ALTHORP

CLIENT: PARK HILL PRIMARY SCHOOL

PROJECT: MINI PITCH PROJECT

DRAWING: SITE PLAN

STATUS	PLANNING	TB	REVISION	01
PROJECT	LSUK.18-0190	ISSUED BY	14.07.18	ISSUE DATE
PAPER SIZE	A3	SCALE	1:1250	DRAWING

18-0190 02